

# Tea Party Tablecloth

This idea is straight from “Bag Magic,” one of those Cotton Council booklets that gave women ideas for sewing with feedsacks. Even if you’ve never had a tea party in your life, once you whip up this adorable tablecloth you’ll be sending out invitations to a tea soiree! It’s designed for a standard 30 x 30 inch (76.2 x 76.2 cm) card table—36 x 36 inches (91.4 x 91.4 cm) is also standard, and this tablecloth would fit that okay too; it would just have less overhang. You can make the tablecloth larger by using 54-inch-wide (1.4 m) fabric and creating a 54-inch (1.4 m) square.

## SUPPLIES

1¼ yards (1.1 m) of 45-inch-wide (1.1 m) fabric, for tablecloth

¼ yard (0.2 m) of fabric, for teapot appliqués

Scrap of contrast fabric, for teapot lids

**Note:** Choose a fabric with some heft, like a 100 percent cotton decorator weight. I find that many of these say “dry clean only” because they’re treated with a stiffening agent, but you want to get that out anyway, so always pre-wash.

## PATTERN PIECES

Use pattern pieces F (teapot) and G (teapot lid)

## WHAT TO CUT

- Create a 45-inch (1.4 m) square from tablecloth fabric by cutting 45 inches in length to match the 45-inch width
- Cut four teapots from appliqué fabric, making sure they’re all facing the same way
- Cut four teapot lids from appliqué contrast fabric

## HOW TO ASSEMBLE

- 1 To hem the edges of your tablecloth, press all sides under ¼ inch (6 mm). Fold over another ¼ inch (6 mm). Pin, stitch, and press. (Figure A)
- 2 To finish the top edges of your teapots, where your napkins go, press the top edges under about ⅛ inch (3 mm) and topstitch. (Figure B)
- 3 Before you place appliqués on the tablecloth, set the tablecloth on the table you will be using so that you know where to position the appliqués. You want them in the corner *on* the table, not hanging off the side.
- 4 Hand-baste appliqués in place, then use a zigzag or blanket stitch to appliqué. Leave the top finished edge open for the napkins. (Figure C)

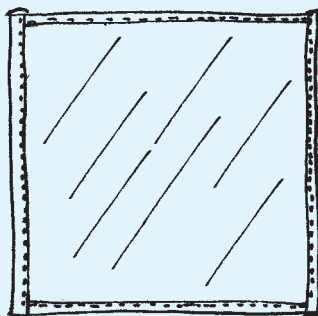


Figure A

Take a ½" narrow hem on all sides (fold under ¼" and then ¼" again)

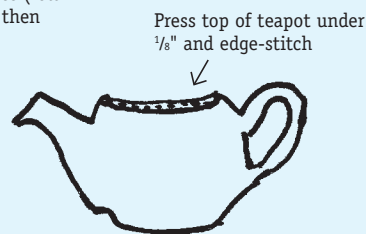
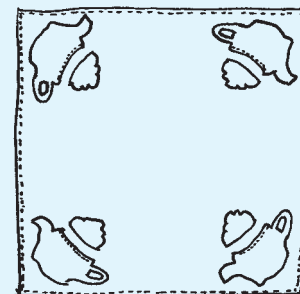


Figure B



Appliqué teapots and lids in corners, leaving the top of each top pot open (for napkin)

Figure C



© Voyageur Press. All rights reserved.

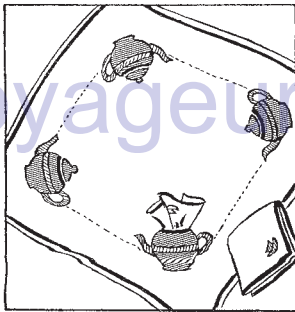


# Ribbon-Embellished Napkins

Complete the look for your tea party by making pretty little napkins to stick inside your teapot lids. If you're making them to match your tablecloth, choose a coordinating ribbon. Of course, a set of napkins always makes a great standalone gift as well!

## SUPPLIES

1 yard (0.9 m) fabric  
About 6 yards (5.5 m) ribbon



## WHAT TO CUT

- Cut four 16 x 16 inch (40.6 x 40.6 cm) squares

## HOW TO ASSEMBLE

- 1 Hem the edges of the napkins the same way you did the tablecloth edges.
- 2 Pin ribbon around the perimeter of the napkin, about  $\frac{3}{4}$  inch (1.9 cm) away from the edge. Topstitch in place, using two rows of stitching to secure ribbon. (Figure D)

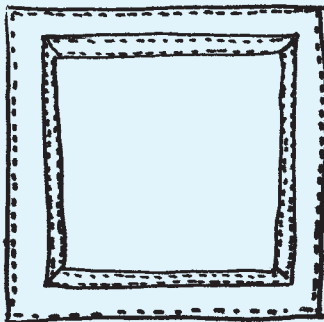


Figure D



This contest to name a new house dress appeared in the February 1938 issue of Household Magazine.